

The background of the image is a night sky featuring the Milky Way galaxy, which appears as a bright, pinkish-purple band of stars and dust stretching across the frame. The sky is filled with numerous smaller stars. In the foreground, the dark silhouette of a person stands on a hill, looking up at the galaxy. The overall mood is one of vastness and wonder.

arcules

strengthen security. reduce complexity.

unified security as a service



Companies that successfully respond to the multi-vector threat environment take an integrated, AI-augmented approach to systems management.

—Gartner, February 2022

managing complexity. reducing risk.

according to Gartner, companies that successfully respond to the multi-vector threat environment take an integrated, AI-augmented approach to systems management.



Source: "Emerging Trend: Convergence of Cyber and Physical Security – Harnessing the Disruption Opportunity" Gartner, 22 February 2022

CHALLENGE

growing risks. limited resources.

- Need reliable, accessible security systems in far-flung physical spaces
- Managing multiple sites and legacy systems stretches resources
- Want to use physical site data and insights to streamline operations



SOLUTION

enterprise control. cloud agility.

- Monitor and control multiple sites from a single web portal
- Enterprise-grade video, AI, access control, automation
- Subscription model reduces risk and complexity



simple. secure. scalable.

launched in 2017 as a cloud-based software service, **Arcules** is built to manage multi-site physical security and intelligence on a massive scale.



enterprise-grade performance and security

Full-featured VMS, access control, analytics, AI, alerts, more. SOC 2 Type II, HIPAA, GDPR.



scalable, open platform built on Google Cloud

Connect existing cameras, devices at multiple sites. Manage multiple sites through web-based interface.

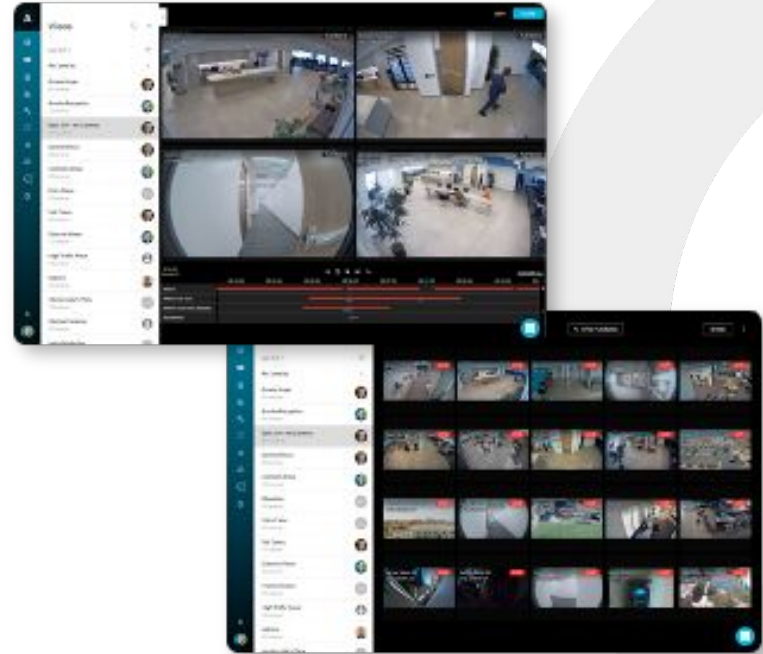


managed service. flexible subscription.

24/7 management. Flexible subscription model. Seamless upgrades included.

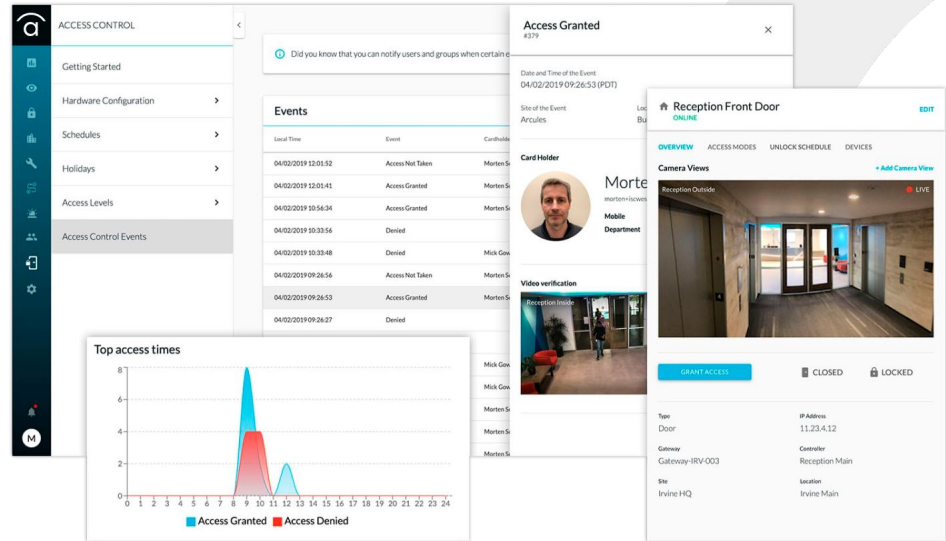
steadfast surveillance across your enterprise

- Continuous video recording – even during an internet outage
- Easily export evidence from all cameras into a shareable case
- Manage and document incidents with only a few clicks of the mouse



extend your reach: multi-site access control

- Control physical access to multiple sites from a single interface
- Live video, playback, export, snapshots
- Support for Axis, Feenix, Mercury, HID



The screenshot displays the Arcules Access Control software interface. On the left is a dark sidebar with navigation icons. The main area is divided into several panels:

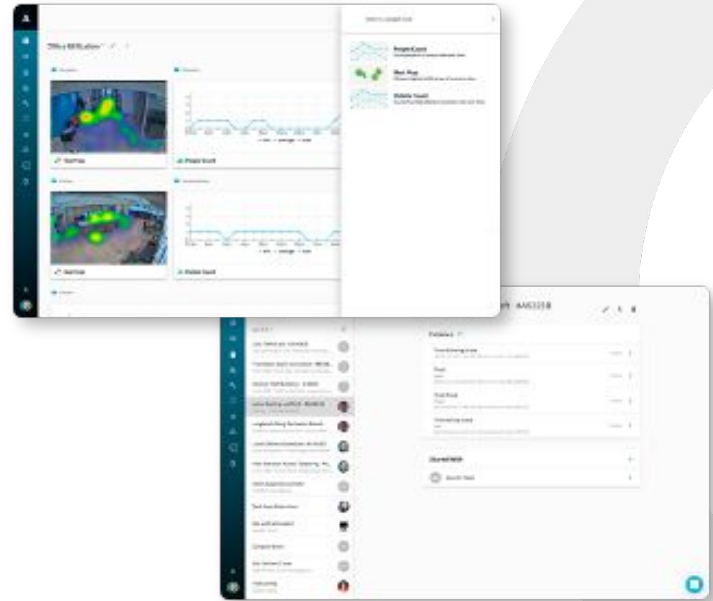
- ACCESS CONTROL** sidebar menu with options: Getting Started, Hardware Configuration, Schedules, Holidays, Access Levels, and Access Control Events.
- Events** table listing access events with columns for Local Time, Event, and Cardholder.
- Top access times** chart showing a peak in access granted (blue) and access denied (red) around 9 AM.
- Access Granted** modal window showing event details like Date and Time, Site of the Event, and Card Holder information.
- Card Holder** profile for Morten S. with a photo and video verification options.
- Reception Front Door** camera view showing a live feed of the entrance area with controls for GRANT ACCESS, CLOSED, and LOCKED.

Local Time	Event	Cardholder
04/02/2019 12:01:52	Access Not Taken	Morten S
04/02/2019 12:01:41	Access Granted	Morten S
04/02/2019 10:54:34	Access Granted	Morten S
04/02/2019 10:33:56	Denied	Mick Gov
04/02/2019 10:33:48	Denied	Mick Gov
04/02/2019 09:26:56	Access Not Taken	Morten S
04/02/2019 09:26:53	Access Granted	Morten S
04/02/2019 09:26:27	Denied	Morten S

Hour	Access Granted	Access Denied
8	0	0
9	8	4
10	0	0
11	0	0
12	0	2
13	0	0
14	0	0
15	0	0
16	0	0
17	0	0
18	0	0
19	0	0
20	0	0
21	0	0
22	0	0
23	0	0
24	0	0

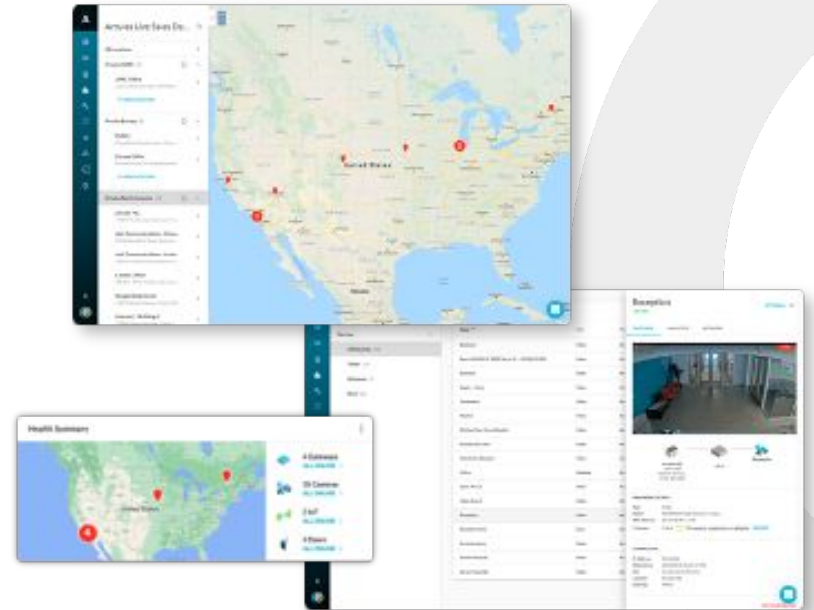
augment your intelligence: AI and analytics

- Visual data and analytics give you insights about your physical spaces
- Generate heat maps, count people, detect vehicles, verify door access
- Quickly find cameras or sensors using a familiar layout in Floor Plan View
- Alerts and notifications



operate everywhere. manage anywhere.

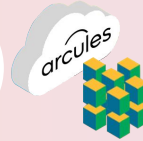
- Cloud-based platform provides secure, centralized management from anywhere
- Automatic updates, upgrades; device health monitoring
- SOC 2 Type II compliant, plus:
 - Multi-Factor Authentication
 - RBAC, SAML / SSO
 - HIPAA
 - GDPR
 - NDAA, TAA



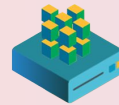
freedom of choice

cloud, edge, or hybrid

- Built on Google Cloud for security, scalability & low latency
- Storage options for low bandwidth & high redundancy
- Mix-and-match for the best of both worlds
- Keep your own cameras. Support for ~6000 models
- Camera to Cloud



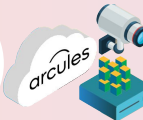
Low latency, offsite cloud storage for high redundancy



Local video storage for low bandwidth situations



Camera to cloud for low camera count locations



Pure Cloud for critical cameras; edge for the rest

support for 6000+ cameras

choose the right cameras for your needs today and in the future.

- Day/Night
- Wireless
- 4/5 MP
- IR/HDR
- Ruggedized
- Multi-sensor
- PTZ

Panasonic

ONVIF®

SONY

MOBOTIX

choose
the brands
you trust

 Hanwha

 **FLIR®**

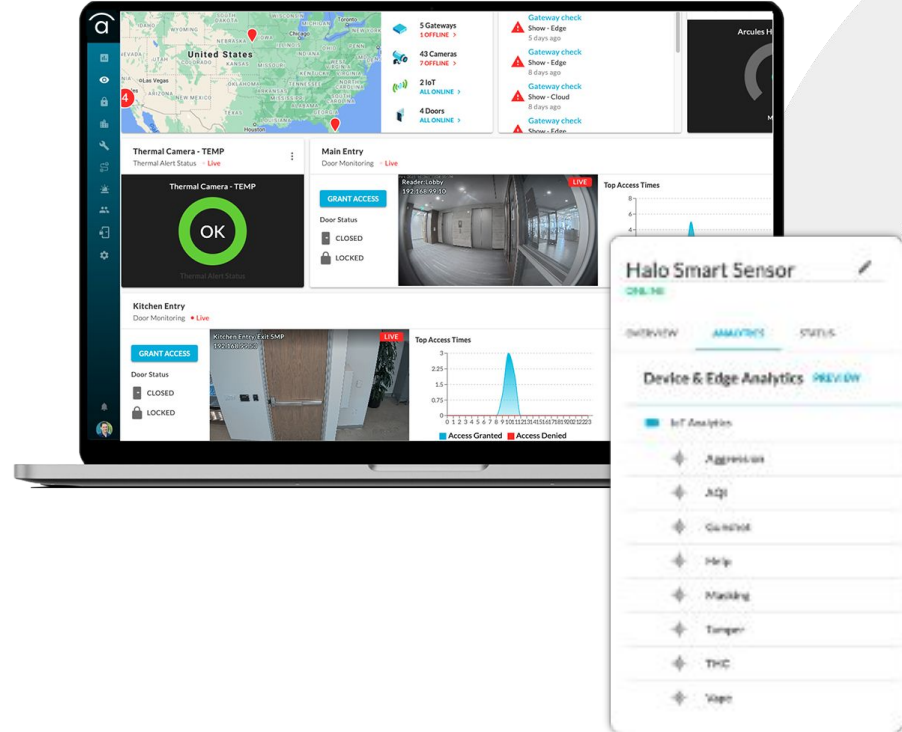
 **BOSCH**
Security Systems

AXIS®
COMMUNICATIONS



extensive IoT integrations

- Access Control
- Camera Analytics
- Environmental Sensors



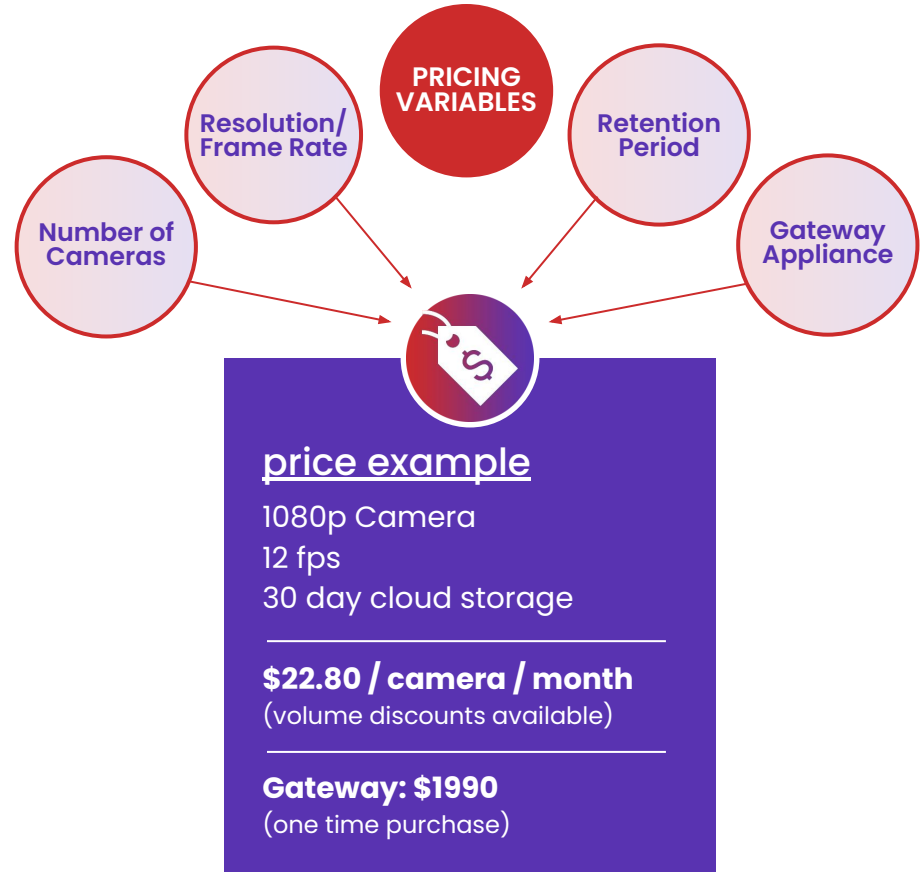
subscription model

standard features

- Cloud VMS
- AI Forensics Search
- Dashboards
- Notifications
- Evidence Sharing
- Upgrades
- Unlimited Users
- Support

options

- Site-specific hardware and software
- Siloed video data
- AI Cloud Analytics
- Volume Pricing
- Door Access Control
- Continuous Recording



wework

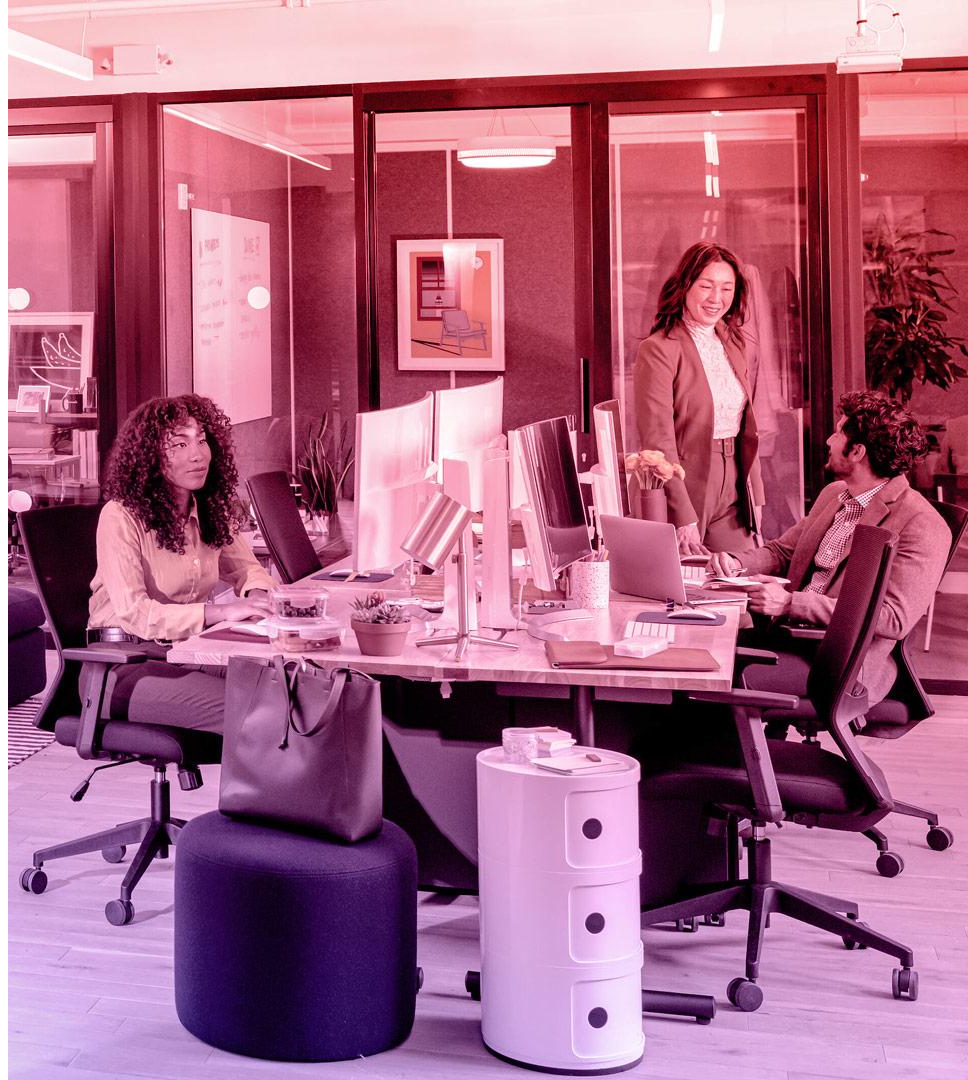
+ arcules

10,000+
CAMERAS

100
LOCATIONS

<5 mo.
DEPLOYMENT

[click here](#) for more success stories



The logo for Arcules, featuring a white arc above the word "arcules" in a lowercase, sans-serif font. The entire logo is centered within a large black circle that has a glowing purple and pink outer ring. The background is a dark space with a starry pattern.

arcules

thank you
learn more at arcules.com

Canon
CANON GROUP